

This document relates to using PFEtoXplane plugin to Laminar X-Plane flight simulator.

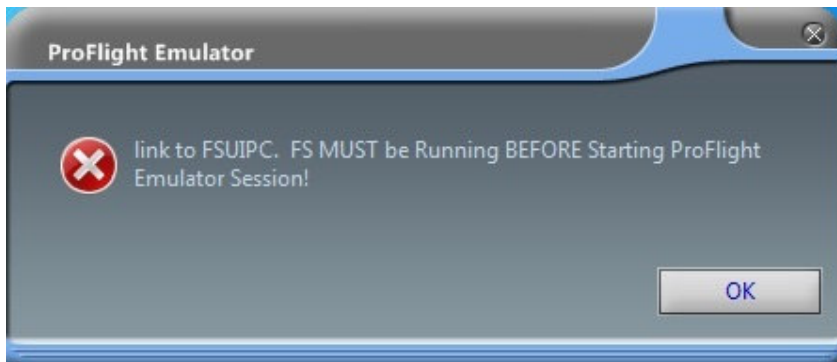
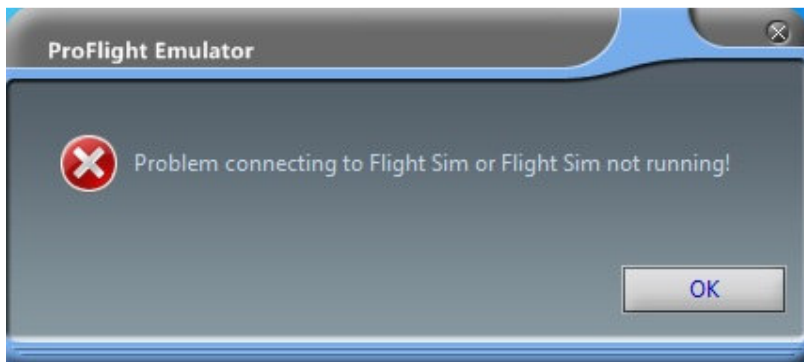
What is PFEtoXplane?

It is a **fat plugin** that sits inside \Xplane installation folder\Resources\Plugins\ folder.

It provides the glue between the third party Pro Flight Emulator ATC program and X-Plane, thus bringing an alternative to the default X-Plane ATC system to the table.

The challenge

If you have owned Pro Flight Emulator ATC, you may have attempted running it with X-Plane, only to be met with a disappointing error message.



Add to that, many X-Plane users are frustrated at the primitive Native ATC provided with XPX and you have a scenario for a lot of frustration.

The solution

While waiting for a better X-Plane built-in ATC, which may become reality in the future...

One of the PFEtoXplane duties is to fool PFE ATC into thinking X-Plane is FSX for which it was designed.

PFE will then be able to connect to X-Plane.



Hang-on, it's not quite what PFE looks like when running with FSX or FS9.

And it doesn't react to any key combinations I press. Not good.

Again, here comes PFEtoXplane to the rescue.

The plugin collects all necessary data from X-Plane in order to tell PFE when a key combination has been triggered. It will also feed it with some other data it fails to gather through XPUIPC. In fact things like weather data for ATIS expected by PFE ATC.

It finally restores PFE ATC window to its familiar face. And even allows you to customize its layout and font colours.



You are now ready to enjoy Pro Flight Emulator ATC within the realm of X-Plane. And best of all, achieve that by just running “SetupPFE.exe”. No cryptic instructions to install run Python scripts or things like that.

And to top it up, we have added some nifty feature, with suggested frequencies to dial should you have no clue, and a keyboard hint to remind you what key combo does what and in which context.



Requirements:

For this plugin to work as expected, you will need.

1. Windows Vista or higher (32 or 64 Bit).
2. XPUIPC free plugin in your \X-plane installation folder\Resources\Plugins folder. Must be V2.0.0.0 or higher (automatically installed when missing).
3. A registered copy of Pro Flight Emulator ATC program, which can be acquired here:

<http://www.oncourse-software.co.uk/store.htm>

4. A valid key file sitting inside \X-plane installation folder\Resources\Plugins\PFetoXplane\
5. X-Plane program files “X-Plane.exe” and “X-Plane-32Bit.exe” set to run as administrator.

Installation:

Following purchase you would have been sent a link to download the package.

Download it to your desktop.

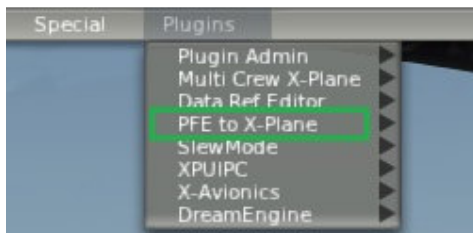
Unzip it and run **“SetupPFE”**

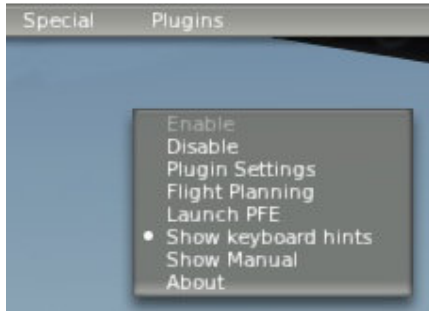
Name	Date modified	Type	Size
Data	14/08/2015 16:13	File folder	
PFetoXplane	14/08/2015 16:13	File folder	
XPUIPC	14/08/2015 16:12	File folder	
Apt.dat	19/11/2011 17:53	DAT File	5,345 KB
Datamgr.exe	16/08/2015 18:23	Application	428 KB
PFetoXplane.cfg	15/08/2015 00:34	CFG File	1 KB
PFetoXplane.pdf	29/04/2015 09:34	Adobe Acrobat D...	272 KB
PFetoXplane.rtf	29/04/2015 09:34	Rich Text Docume...	8,169 KB
Radio.dat	30/05/2012 21:12	DAT File	1,276 KB
registration.txt	10/04/2015 14:58	Text Document	1 KB
SetupPFE.exe	16/08/2015 17:27	Application	53 KB

It couldn't be simpler than that.

If you have more than one X-Plane installation, ensure you have installed the plugin to your second X-Plane installation when prompted.

Plugin Menu





Plugin Settings

You can select where PFE ATC window is displayed



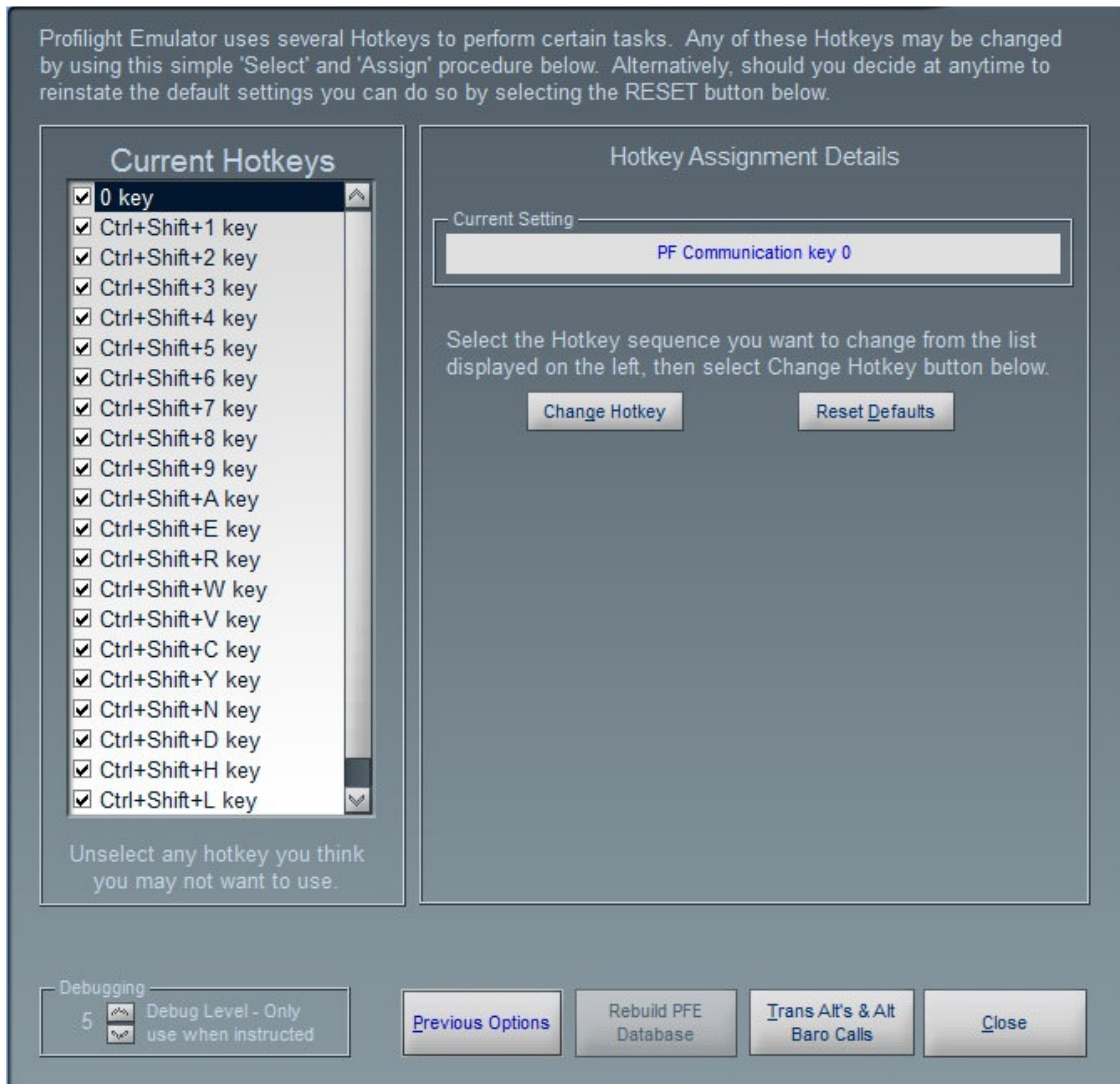
You can customize PFE ATC window font colours, as well as set this Plugin to auto-start with X-Plane. There is also the option to disable X-Plane own ATC system.



Pro Flight Emulator Settings

Because X-Plane assigned many simple key combinations for general simulator interaction, you will need to set your Pro Flight Emulator key assignments, as per screenshot below.

You are allowed to change keys, but all of them MUST use modifiers CTRL and SHIFT



Troubleshooting & Support

Once you disable this plugin, you will see this garbled text window. Is it normal?



Yes, it is normal. Once the plugin stops formatting the PFE text the way it should display, the XPUIPC takes over formatting the string. Since it doesn't support multi-line, you end-up with garbled text.

Although we have done everything to ensure using this Plugin is a pleasant experience, should you experience issues, save your PFEtoXPX.lic file somewhere on your hard drive, delete the entire \PFEtoXplane\ folder in \Xplane installation folder\Resources\Plugins\ folder. Then re-run "**SetupPFE.exe**" found in downloaded unzipped file, and put your key back in \PFEtoXplane\ folder.

Barring that, contact support@multicrewxp.com for further advice.

Thank you

The FS++ team